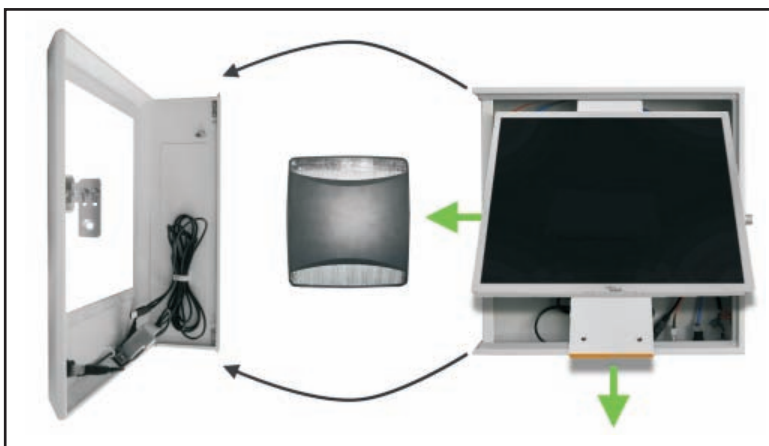
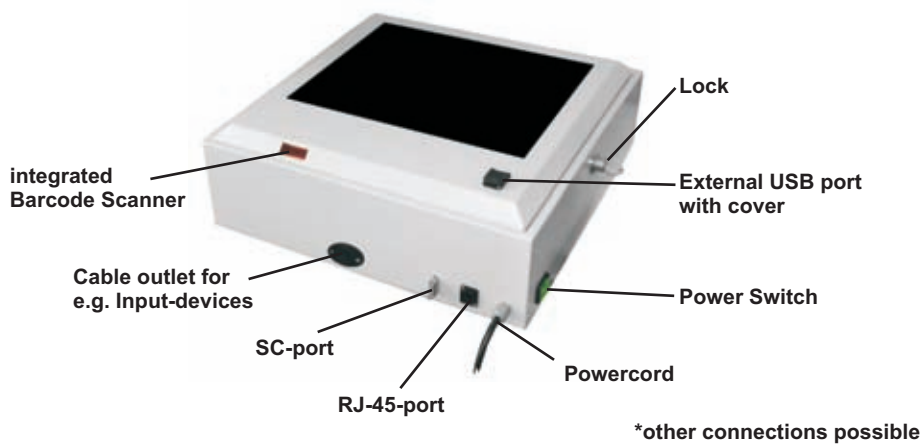


## OP PC: Sana.PC complete



large lockable service door



Electronics could be accessed easily

## Properties:

### Mechanical properties:

- Compact all-in-one system
- IP54 (IP65 possible)
- Solvent-resistant
- Sterilizable
- Ergonomically designed
- Robust
- Anti-bacterial surface coating
- Electronic components could be accessed easily
- Lockable case
- Dimensions: 510x500x170 mm (19" Version)
- Weight: 14 kg (19" Version without safety electronics)

### Installation options:

- Wall-mounted
- Desktop version
- mounted on swivel arms (VESA)

### Usable electronic components:

- Standard electronic components
  - Compatibility and resistance guaranteed
- *Display:*
  - 17" up to 21"
  - Multi-monitoring possible (additional display)
  - Use of diagnostic greyscale displays according to DIN 6868-57 possible
  - approved displays: **NEC** and **Eizo** with DICOM-Preset
- *Computer:*
  - ThinClient up to SFF-PC
- *Input systems:*
  - Touchscreen
  - Keyboard and mouse
  - Keyboard with keypad or trackball
  - Barcode scanner
- Connection of external modalities possible
- Medical isolating transformer according to DIN EN 60601-1-1 and DIN EN 60601-1-2 possible