

FixMode as wall-mounted and mobile system

Protective casing for PC as wall-mounted and mobile system.

With FIXMode we offer a convenient possibility to protect your standard PC against humidity, mechanical impact and chemicals.

It's an inexpensive and patented product for IT workstations in healthcare or industrial markets.

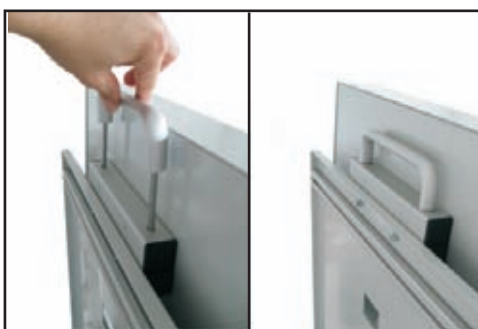
Mounting of the FIXMode and cleaning is very easy.



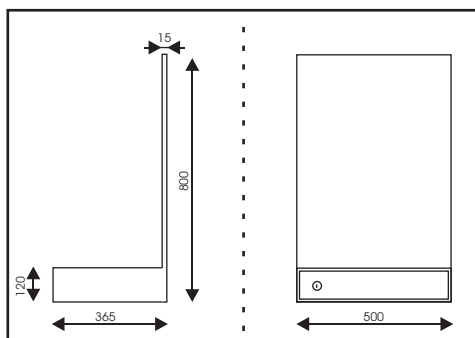
Antimicrobial surface coating with sterions



PC is easily accessible



Easy mounting of the display possible



Dimensions



FixMode incl. TFT-Saver as mobile system

Properties:

Mechanical properties:

- Compact all-in-one system
- IP54 (IP65 possible)
- High-value material
- Solvent-resistant
- Sterilizable
- Ergonomically designed
- Robust
- Anti-bacterial surface coating
- Electronic components could be accessed easily
- Lockable case
- Dimensions : 500x800x350 mm

Installation options:

- Wall-mounted
- Mobile system

Usable electronic components:

- Standard electronic components
- *Display:*
 - 17" up to 30"
 - Multi-monitoring possible
 - Use of diagnostic greyscale displays according to DIN 6868-57 possible
 - approved displays: **NEC** and **Eizo** with DICOM-Preset
- *Computer:*
 - ThinClient up to SFF-PC
- *Input systems:*
 - Touchscreen
 - Keyboard and mouse
 - Keyboard with touchpad or trackball
 - Barcode scanner
- Connection of external modalities possible
- Medical isolating transformer according to DIN EN 60601-1-1 and DIN EN 60601-1-2 possible